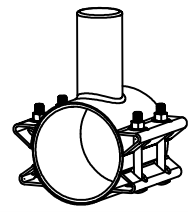
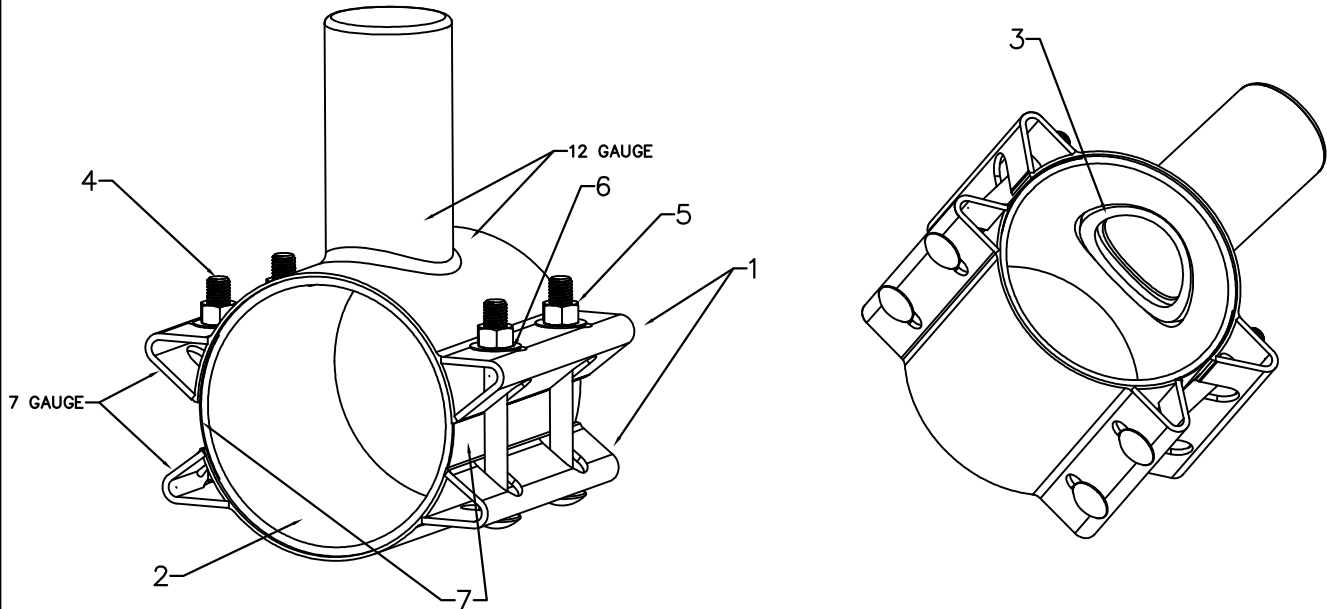


Cambridge Brass
P.O. Box 249
140 Orion Place
Cambridge, Ontario
Canada N1R 5V1
Tel: (519) 621-5520
Fax: (519) 621-8674
http://www.cambridgebrass.com



MODEL NO. 8600

TERMINATION SLEEVE



PARTS AND MATERIAL:

1. SLEEVE BODY MADE OF 18-8 TYPE 304 STAINLESS STEEL
2. SLEEVE WAFFLE GASKET IS MADE OF NBR & MEETS STANDARD NSF 61
3. SLEEVE RING GASKET IS MADE OF NBR & MEETS STANDARD NSF 61
4. BOLTS MADE OF 18-8 TYPE 304 STAINLESS STEEL, 5/8" ROLL NC THREAD
5. 5/8-11 MADE OF 18-8 TYPE 304 STAINLESS STEEL HEAVY HEX, TEFLON COATED NUTS TO PREVENT GALLING
6. WASHERS MADE OF 18-8 TYPE 304 STAINLESS STEEL
7. INTEGRATED DUAL BRIDGE PLATES MADE OF 18-8 TYPE 304 STAINLESS STEEL

FEATURES:

- ALL SLEEVE COMPONENTS ARE MADE OF 18-8 TYPE 304 STAINLESS STEEL
- FULLY PASSIVATED FOR CORROSION RESISTANCE
- NBR RUBBER GASKET MATERIAL
- RECOMMENDED SLEEVE BOLT TORQUE ~ 80 FT/LBS
- CONFORMS TO ANSI/NSF STANDARD 61-8
- CAMBRIDGE BRASS TERMINATION SLEEVES ARE DESIGNED TO WITHSTAND WATER WORKING PRESSURE UP TO, BUT NOT EXCEEDING THE WORKING PRESSURE OF THE PIPE UP TO 250 PSI MAX

EXAMPLE: 8600-0690-8-4—OUTLET SIZE COVER
SERIES PIPE Ø STAINLESS BAND WIDTH

Cambridge Brass considers the information in this submittal form to be correct at the time of publication. Item and option availability, including specifications, are subject to change without notice.

CATALOG NUMBER	OUTLET COVER SIZE "4"-Ø3"ID X 6"H	TERMINATES VALVE	STAINLESS BAND WIDTH	PIPE Ø RANGE
8600-0690-WIDTH-4	4	1/2" TO 1"	8" WIDE	6.50"-7.30"
8600-0920-WIDTH-4	4	1/2" TO 1"	8" WIDE	8.80"-9.60"

SUBMITTED BY: